

WELCOME TO



ELVEDEN COURT

A luxury resort-style community in Calgary's Springbank Hill.



Floorplan 1510



Beds: 3



Baths: 2.5



Total Developed Square Footage: 2,500 sq. ft.



Location: Heath Lots



Garage: Double

Floorplan 1510

Main Level

1 Bedroom 1.5 Bathrooms 1,510 sq. ft.

outdoor fireplace

12-foot patio doors to deck area

Great room with soaring 16-foot ceilings
Selection of designer fireplace surround

open floorplan in main living area

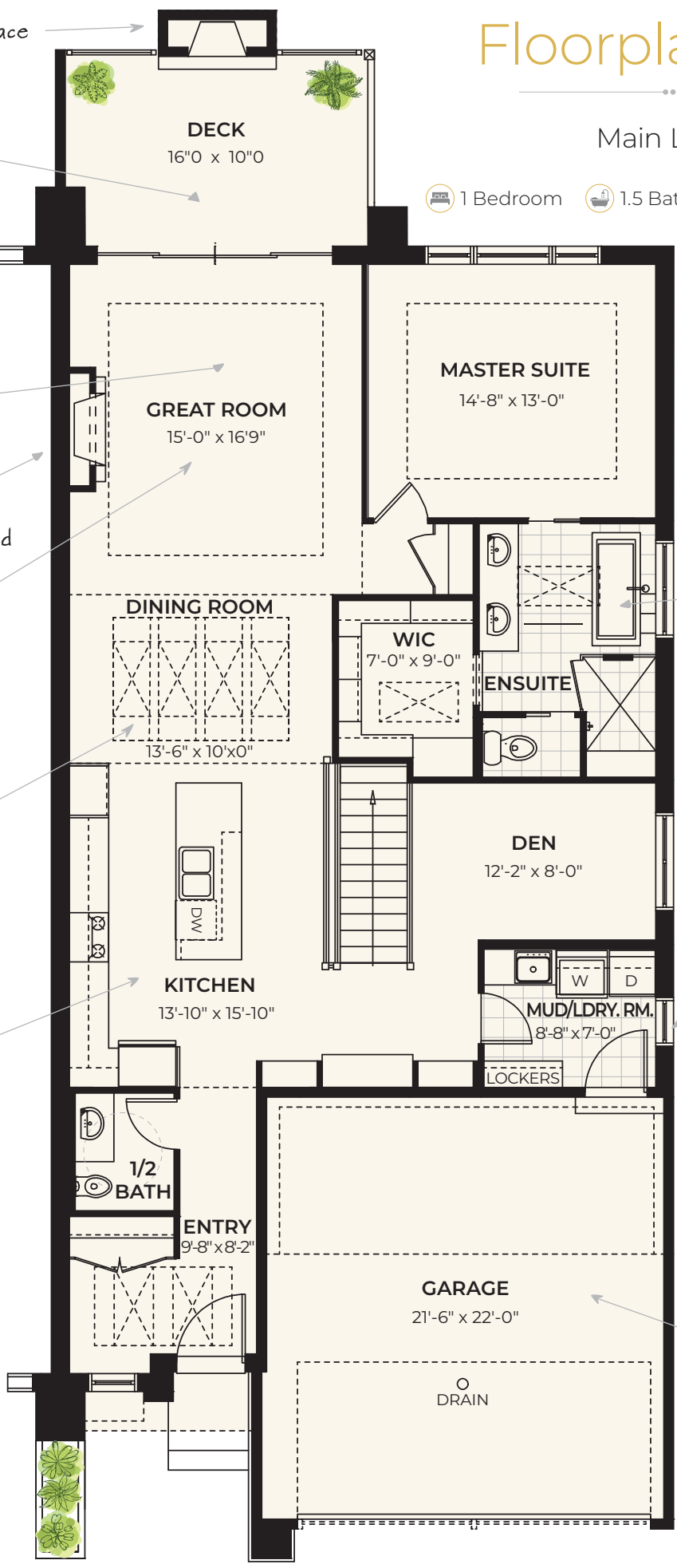
Stunning skylight detail with 12' ceilings

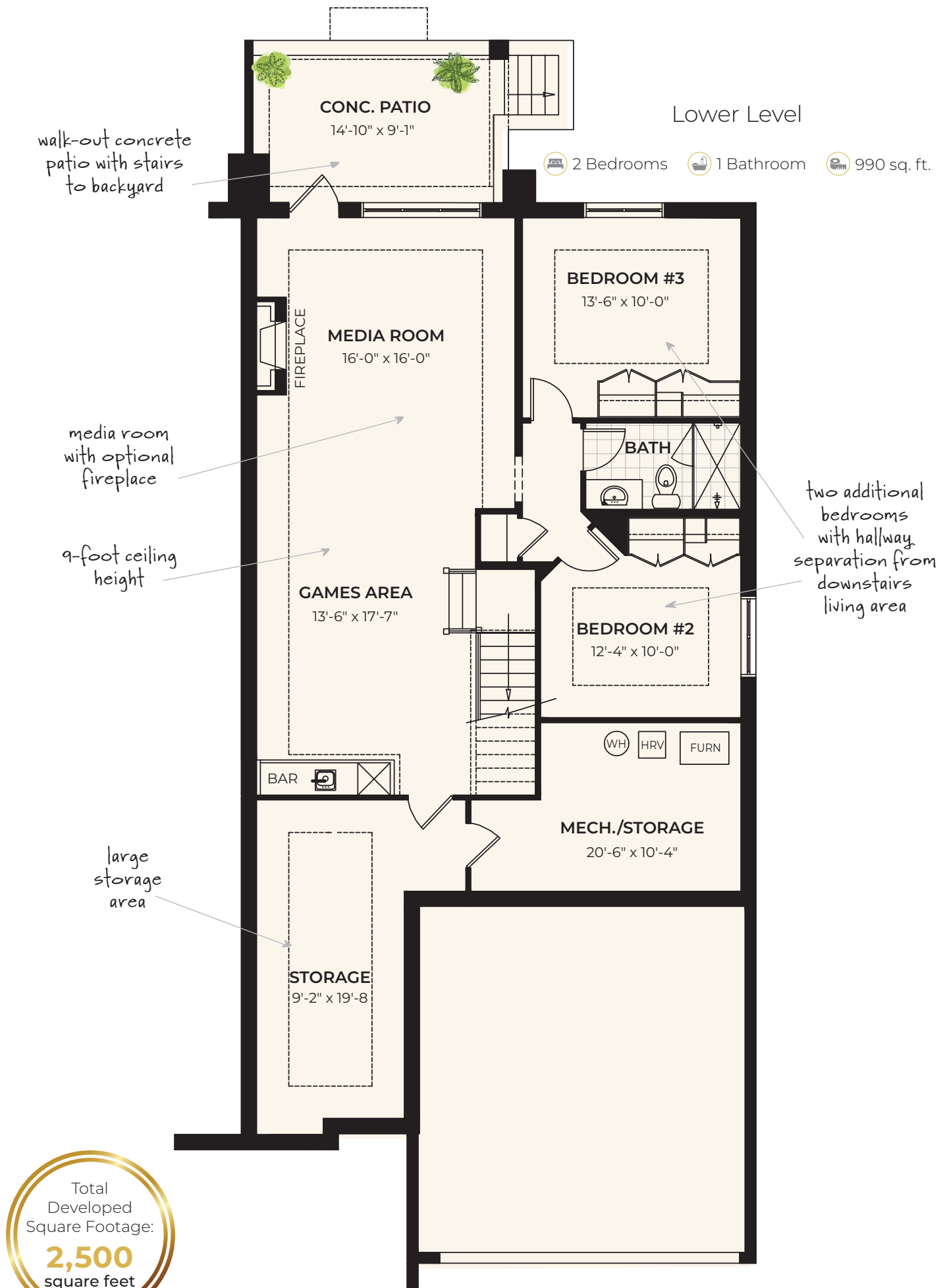
spacious kitchen with plenty of seating is ideal for entertaining

elegant ensuite with separate shower and soaker tub

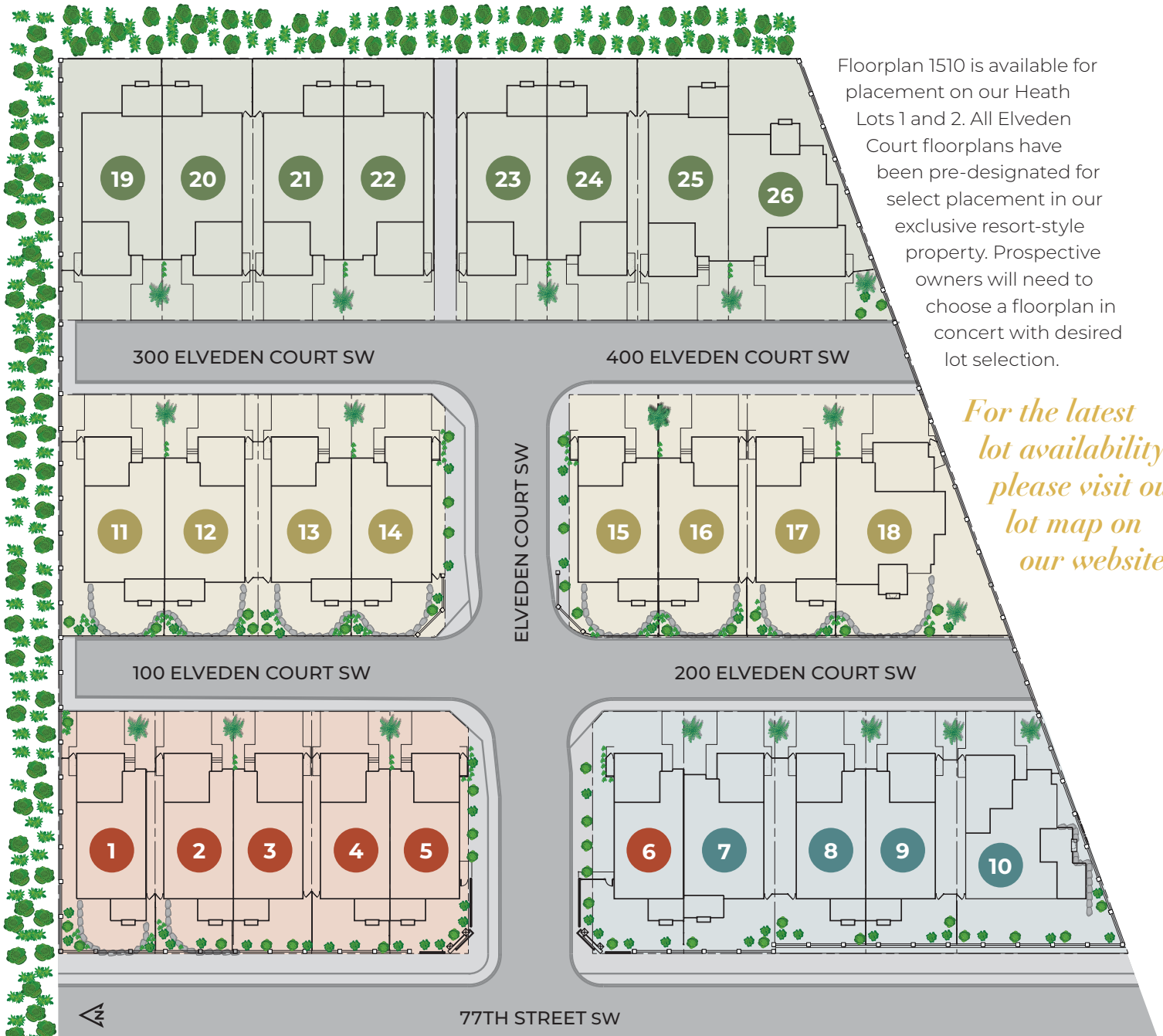
combination mudroom and laundry room with built-in cabinetry

double-car garage





TREED MUNICIPAL RESERVE



Floorplan 1510 is available for placement on our Heath Lots 1 and 2. All Elveden Court floorplans have been pre-designated for select placement in our exclusive resort-style property. Prospective owners will need to choose a floorplan in concert with desired lot selection.

For the latest lot availability, please visit our lot map on our website.

■ **HEATH:** 1510 Model
 ■ **TERRACE:** 1721 Model
 ■ **VIEW:** 1721 Model
 ■ **FOREST:** 1968 Model

The Builder



MODERNO
modernoinc.ca

LUXURY AMENITIES. MODERN LIVING. ARTISAN CRAFTSMANSHIP.

Founded in 2003, Moderno began construction on finely crafted custom homes in Canmore and Calgary. Today, Moderno can be found in Calgary, Vancouver, Kelowna and the Fraser Valley. Specializing in luxury custom homes, acreage and estate living, as well as lock-and-leave residential communities, we offer our customers quality, craftsmanship and an exceptional home building experience.

You will love the Moderno difference.

EMAIL: sales@modernogroup.com • PHONE: 403.663.0123 • VISIT: elvedencourt.com