

3 Floorplans to Choose from:
1510 • 1721 • **1968**

WELCOME TO



ELVEDEN COURT

A luxury resort-style community in Calgary's Springbank Hill.



Floorplan
1968



Beds: 3



Garage: Triple



Total Developed Square Footage: 3,152 sq. ft.



Baths: 2.5



Roof-top Patio



Optional Upper Level: 266 sq. ft.



Location: Forest Lots

Floorplan 1968

Main Level

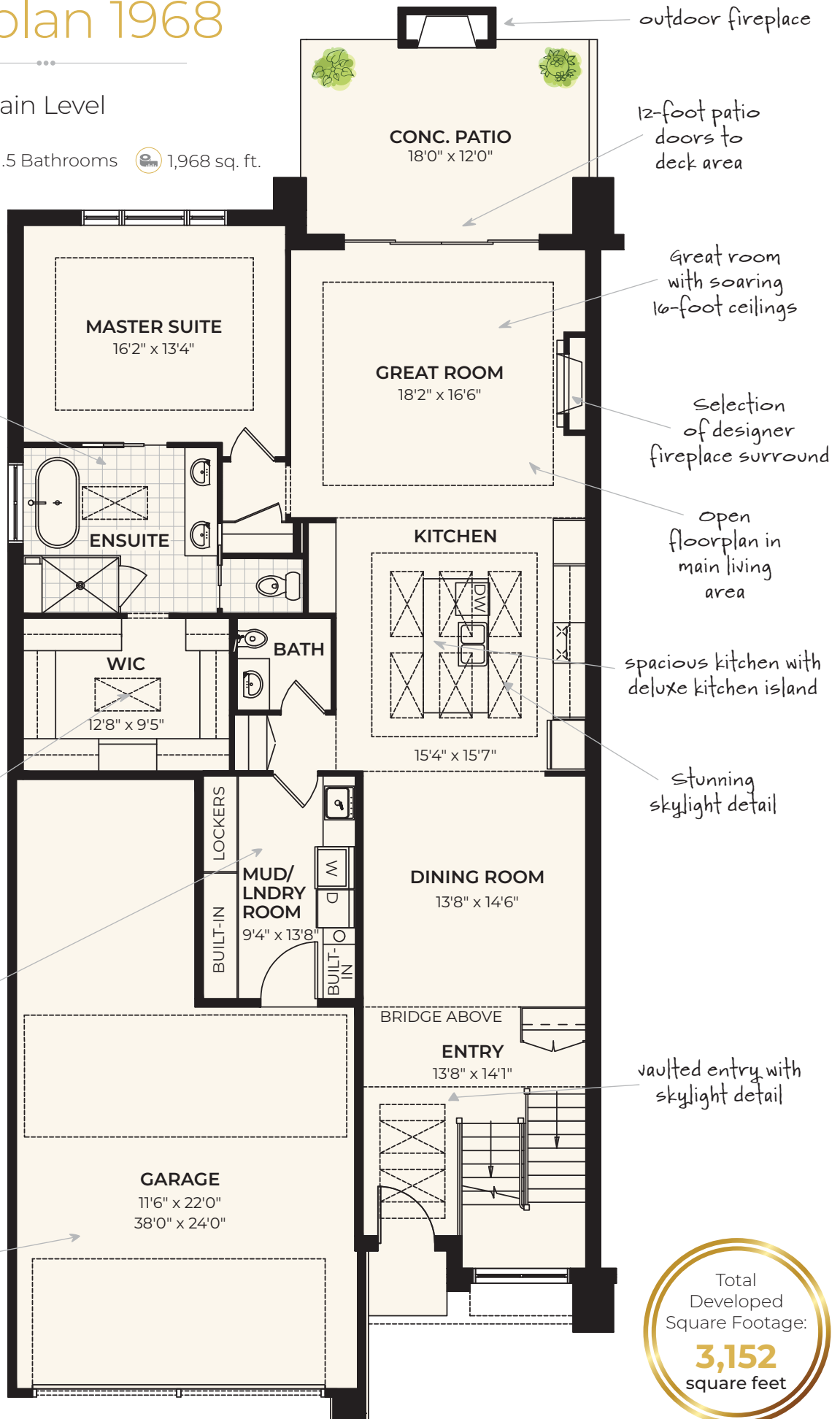
 1 Bedroom  1.5 Bathrooms  1,968 sq. ft.

elegant ensuite
with separate
shower and
soaker tub

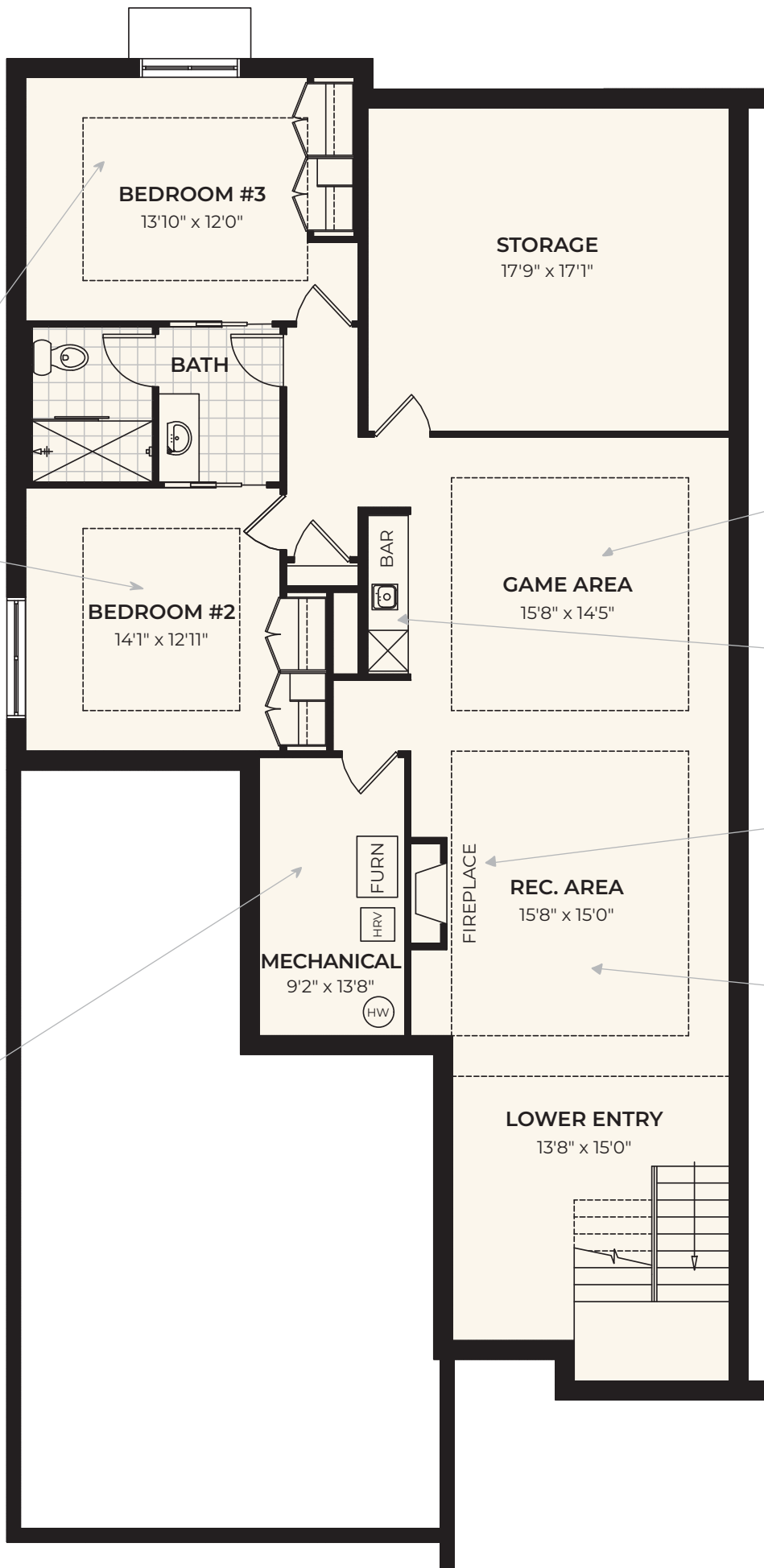
expansive
walk-in closet
complete with
built-ins

combination
mudroom and
laundry room

triple-car
garage



Total
Developed
Square Footage:
3,152
square feet



Lower Level

2 Bedrooms

1 Bathroom

1,184 sq. ft.

two additional bedrooms with extra hallway separation from downstairs living area

expansive games area

wet bar


rec. area with fireplace

9-foot ceiling height

combination mechanical/storage room

Roof-top Patio

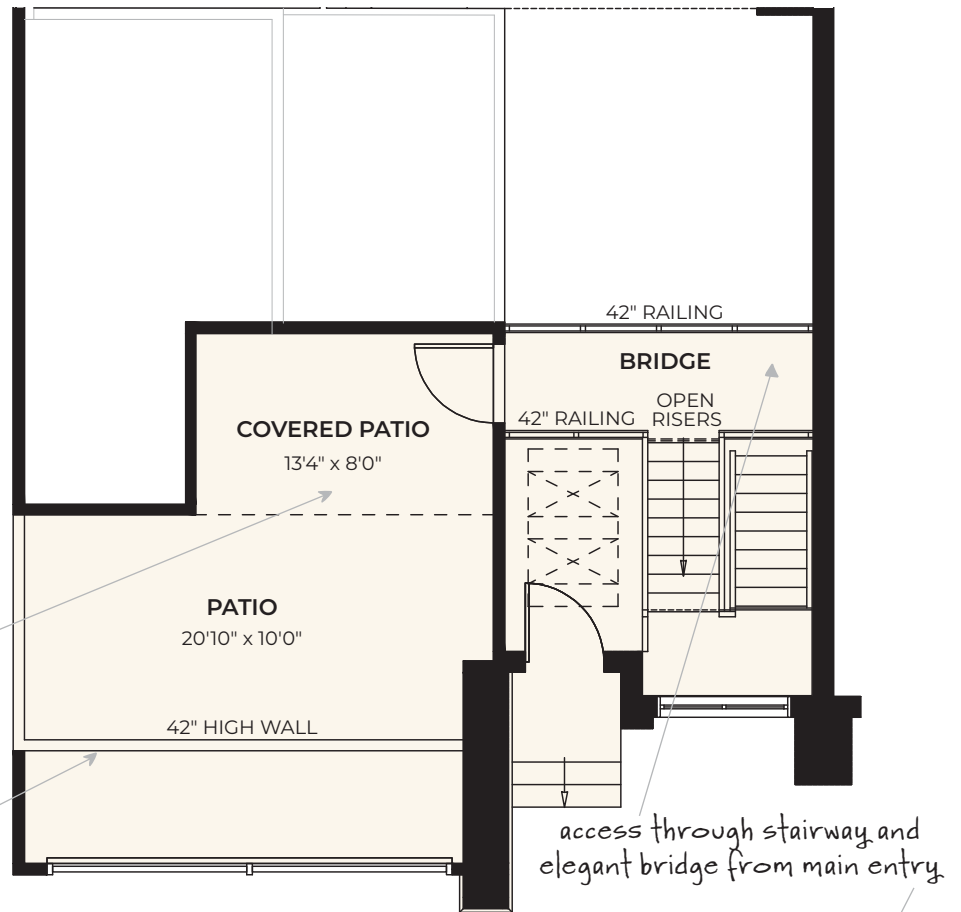
Enjoy your own spacious roof-top patio! With 310 square feet of space, you can bask in your own private retreat. Part covered, and part uncovered, this patio is ideal for year-round use. This patio layout is standard (included) in the 1968 model.

 310 sq. ft.

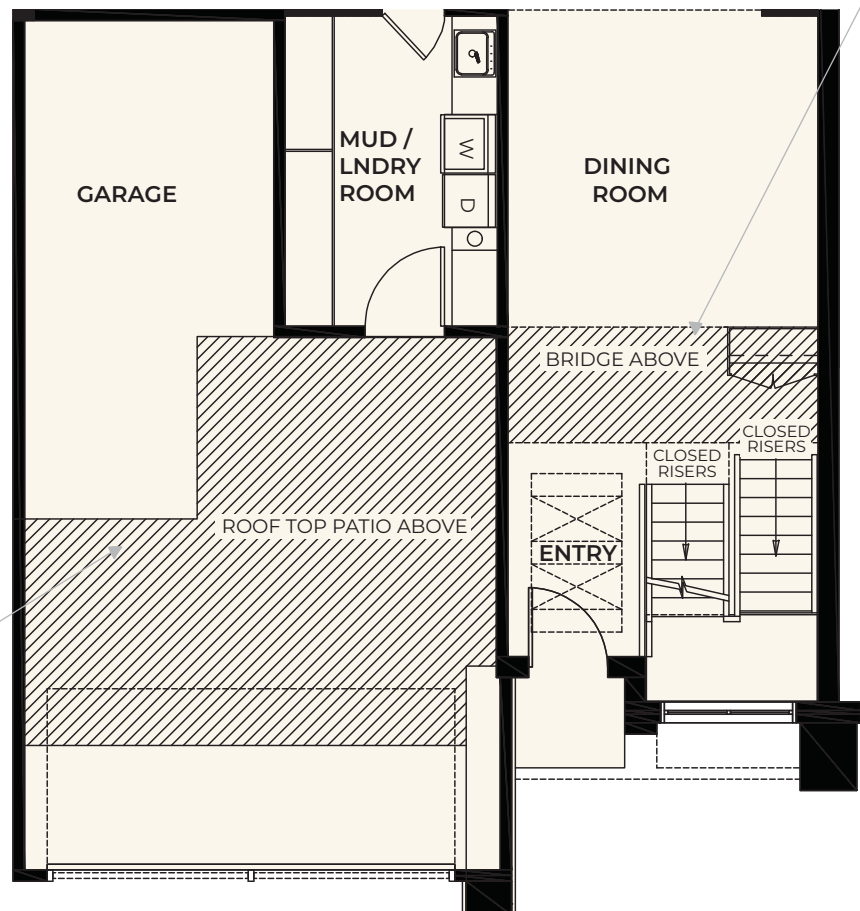
covered patio
for year-
round use

42"-wall for
safety and
optimal privacy.

Outdoor Patio Orientation - Patio View



Indoor Patio Orientation - Main Floor View



patio situated
above the
garage to
minimize sound
effects

Optional Upper Floor Plan



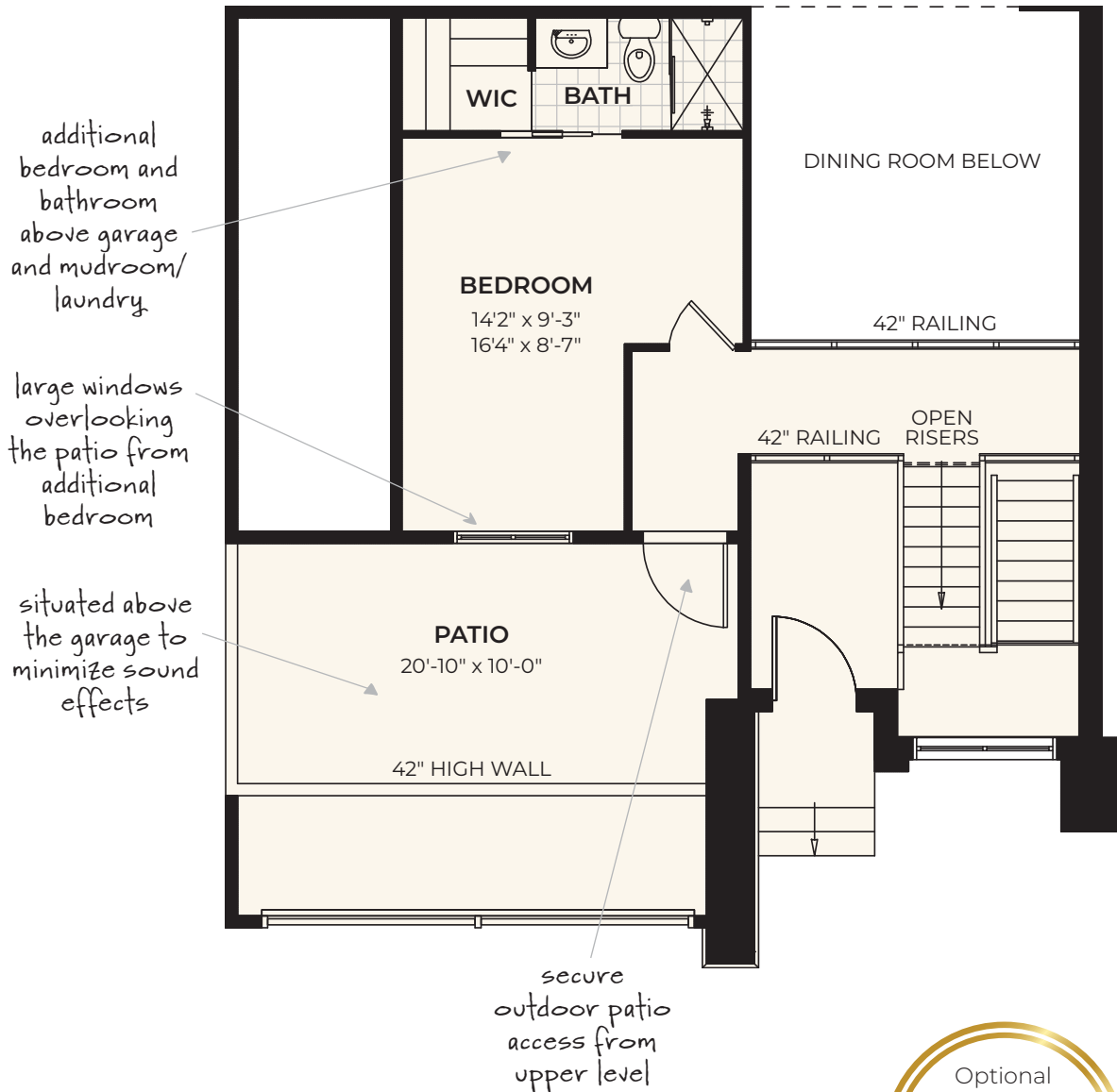
1 Bedroom



1 Bathroom



266 sq. ft.



Please note the optional upper floor plan does not allow for the covered patio option shown on the "Rooftop Terrace" page and instead has the outdoor patio space only.



TREED MUNICIPAL RESERVE



Floorplan 1968 is available for placement on our Forest Lots 19 to 26 that back onto a treed municipal reserve. All Elveden Court floorplans have been pre-designated for select placement in our exclusive resort-style property. Prospective owners will need to choose a floorplan in concert with desired lot selection.

For the latest lot availability, please visit our lot map on our website.

■ **HEATH:** 1510 Model
 ■ **TERRACE:** 1721 Model
 ■ **VIEW:** 1721 Model
 ■ **FOREST:** 1968 Model

The Builder



MODERNO
modernogroup.com

LUXURY AMENITIES. MODERN LIVING. ARTISAN CRAFTSMANSHIP.

Founded in 2003, Moderno began construction on finely crafted custom homes in Canmore and Calgary. Today, Moderno can be found in Calgary, Vancouver, Kelowna and the Fraser Valley. Specializing in luxury custom homes, acreage and estate living, as well as lock-and-leave residential communities, we offer our customers quality, craftsmanship and an exceptional home building experience.

You will love the Moderno difference.

EMAIL: sales@modernogroup.com • PHONE: 403.663.0123 • VISIT: elvedencourt.com